

PRIVATE



FLYING

A Section of **FLIGHT** in the Interests of the Private Owner, Owner-Pilot, and Club Member

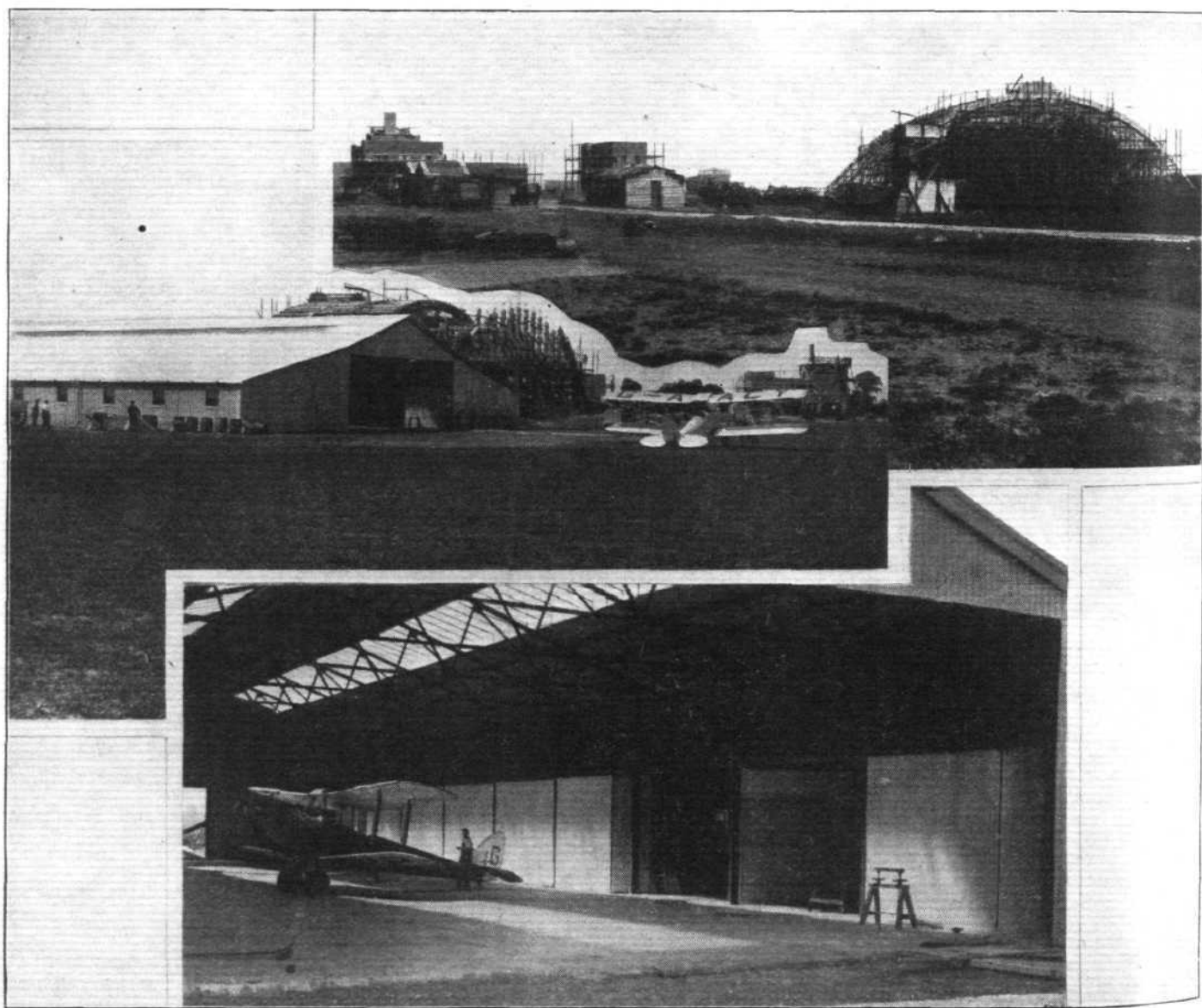
LONDON'S NEW PRIVATE AERODROME

Heston Air Park Nearly Completed

THE aerodrome plans of Airwork, Ltd., which **FLIGHT** detailed last October, are now nearing completion at the Heston site close to Hounslow, Middlesex. Heston Air Park, as it is definitely styled, is now a fixed and distinct landmark on that flat country off the Great West Road about 10 miles west of London. You can at once observe the fine potentialities of this site and its surrounding country for constant aircraft traffic, and with what shrewd judgment and vision the directors of Airwork, Ltd., have prepared it. It is alone a remarkable fact that such a site should have been found within so short a distance of London in view of the long and extensive building developments radiating in all directions from the city.

The locality surrounding the Heston aerodrome will, as far as one can visualise, preserve its advantageous openness and flatness, thereby attaching, as it were, so much useful area to the actual landing field. A landing from almost any direction should hardly tax the skill of even the amateur. There is, incidentally, a tall and fascinating factory chimney some distance to the north for the pilot who *must* hit the only obstruction within sight, as so humorously expressed in Mr. Ernest Noble's drawing in a recent issue of **FLIGHT**.

The surface of the aerodrome is exceptionally smooth to the eye and seems to maintain its evenness over the whole area. One or two bumps which adorned it originally have been sat upon.



HESTON AIR PARK : (Top) On the left is the building which will contain a restaurant, club rooms, offices, and everything for the social amenities of the aerodrome. On the right is the large hangar which will have Esavian doors. (Middle) One of the lock-up garages which contains 20 lock-ups. The machine is the Airwork, Ltd., Gipsy-Moth, fitted with Handley Page slots. (Below) Interior of lock-up garage showing the sliding doors which are fitted throughout. They slide round the side of each lock-up when pulled open.

["FLIGHT" Photographs