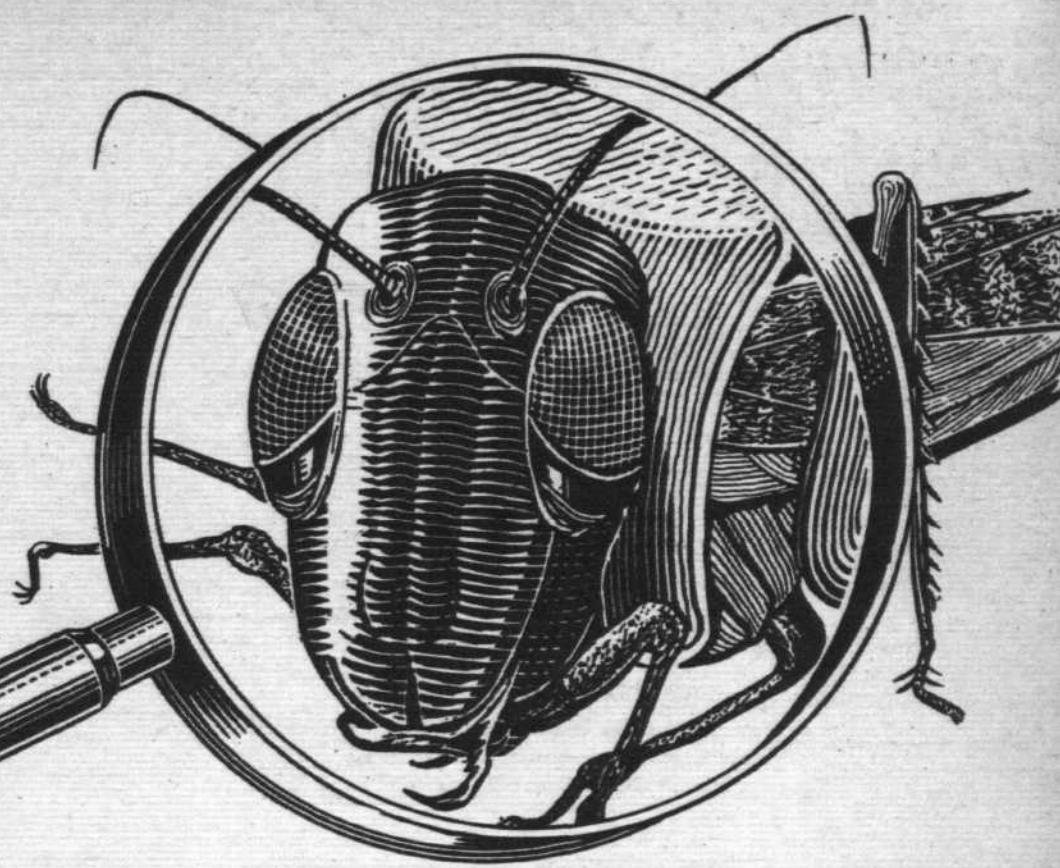




A FACE IN A MILLION



and, moreover, a face which can be seen in millions. For it's the death mask worn by countless hordes of locusts stricken down by insecticide sprayed from Avro Ansons equipped for pest destruction. This modern way of attacking inaccessible breeding grounds has proved the economy of using suitable aircraft.

Compare these operational requirements with the Anson facts :

1. Two engines for safety over broken terrain.
2. Manoeuvrability close to the ground.
3. Ability to operate from strips prepared near the dropping zone.
4. Sturdiness to withstand damage in operations from rough, hastily prepared strips.
5. Reliability to ensure trouble-free operation away from permanent bases.
6. Appropriate insecticide capacity for operations which must be closely controlled by ground observation to avoid wastage.

{Two Armstrong Siddeley Cheetah engines which are renowned for their reliability.

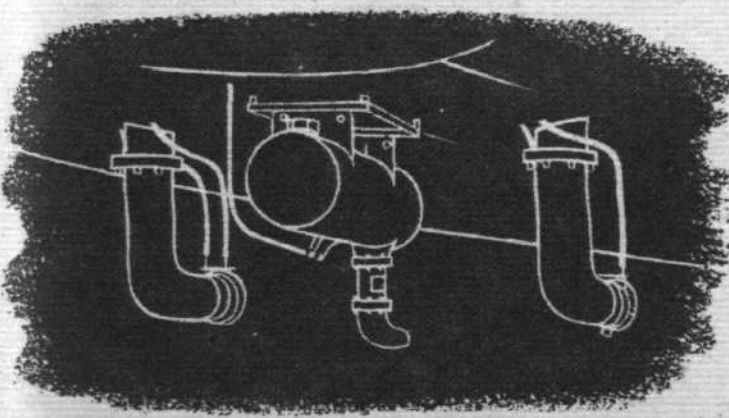
{The Avro Anson's capabilities have been proved in large-scale spraying operations at low levels.

{At full load the Avro Anson takes off in 550 yards and requires only 300 yards from touch down to stop.

{The Avro Anson fuselage, of welded steel tubular construction, possesses great strength and resiliency and is capable of absorbing an unusual amount of severe handling.

{The Avro Anson's reputation for reliability is the outcome of 15 years' service in all parts of the world.

{Two fuselage insecticide tanks, having a total capacity of 200 gallons, have proved adequate for a coverage of 1,000 acres in a single 20 minute sortie,



ANSON

A. V. ROE & CO. LTD. MANCHESTER

Member of the Hawker Siddeley Group