



Left, Dennis F29 appliance used to protect BEA engineering base at London Airport



Pyrene Mk VI fire/crash tender on Alvis Salamander chassis

## AIRPORTS AND GROUND EQUIPMENT . . .

company supplies for airfields are thoroughly up-to-date in performance and equipment.

Designed by **Sun Engineering (Richmond) Ltd.** in conjunction with the MoA, a fire appliance illustrated on this page carries a 540gal water tank, 100gal foam compound tank (7,000gal/min), 12 x 50lb CO<sub>2</sub> cylinders and very complete ancillary equipment. Powered by a Rolls-Royce B.81 engine in a 6 x 6 Thornycroft chassis, it is capable of up to 60 m.p.h.

**Fire Armour Ltd** manufacture fire-fighting and rescue vehicles of many sizes, and often these are designed to suit local requirements. A photograph on this page shows a Firefly tender of a type which has been supplied to several major airports in the Commonwealth. A feature of these vehicles is that they are as useful for the protection of airport buildings as for fighting crash fires. In all designs there is concentration on securing maximum foam discharge-rate. Fire Armour also produce jeep-type vehicles which include electric generators for supplying power to rescue-saws and for floodlighting the crash area.

**Dennis Bros Ltd** make a number of types of fire appliances, a typical example being the F.29 airport vehicle illustrated. Equipment includes a 300gal water tank, 35gal foam compound tank and 4 x 50lb CO<sub>2</sub> cylinders.

Other suppliers of crash/fire tenders include **A.F.P. Engineering Ltd, Douglas Equipment Ltd, General Fire Appliance Co Ltd** and **Red Devon Ltd.**

Well known for many years for airport fire-fighting equipment, the **Walter Kidde Co Ltd** include in their range of equipment several types of hand-truck CO<sub>2</sub> extinguishers for attendance on aircraft during starting up. The largest of these extinguishers gives a 900 cu ft free-gas discharge. There is also a range of hand extinguishers.

For airports with areas of water on or near the boundaries, the **R.F.D. Co Ltd** supply the Zodiac rescue boat, powered by an outboard engine. This inflatable craft can be quickly transported to any convenient point and launched. Inflatable life-rafts can be used to give additional rescue capacity. Also made by R.F.D. are lifting bags of four-ton or 12-ton capacity to assist in salvaging aircraft which have made wheels-up landings.

Special-purpose Land-Rovers for fire-tender and other airfield duties are supplied by **R. J. Searle Ltd.**

The mobile floodlighting equipment made by **Harley Aircraft Landing Lamps** (see page 916) fulfils a valuable purpose in the event of crashes after dark.

### Runway Clearance

"Traciacs" of up to 30 tons capacity for the quick removal of crashed aircraft are made by **Skyhi Ltd**, who will shortly have available a new type capable of handling the largest commercial aircraft.

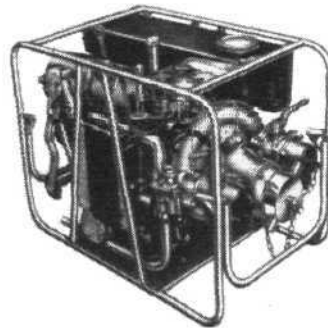
**John Curran Ltd** manufacture a 60-ton mobile crane specially designed for the salvage of aircraft in the 150-ton class, together with other items of clearance equipment. Other crane manufacturers (see page 925) include **Anderston Clyde Engineers Ltd, K & L Steel-founders & Engineers Ltd** and **Steels Engineering Products Ltd** (makers of the Coles crane).

### Protective Clothing

Makers of protective clothing—some of it for emergency use, some to give protection against deleterious industrial processes—include **Siebe, Gorman & Co Ltd, Baxter, Woodhouse & Taylor Ltd, Bell's Asbestos & Engineering Ltd** and **P. Frankenstein & Sons (Manchester) Ltd.**

The **R.F.D. Co Ltd** manufactures anti-kerosene clothing for refuelling crews.

**Sonex** ear defenders, giving an attenuation



Below, Rover gas-turbine fire pump unit



Resuscitation equipment by Walter Kidde Co

of 15-30db, are made by **Amplivox Ltd** and are in use at LAP and other airports. Headsets incorporating ear defender fittings are also part of the Amplivox range of this type of equipment. Other manufacturers of hearing-defence equipment include **Airmed Ltd, The Anticooustic Co** and **Siebe, Gorman & Co Ltd.**

Breathing apparatus may fittingly be included in this section, and among its manufacturers are **Siebe, Gorman & Co Ltd** and **Normalair Ltd.** The **Walter Kidde Co Ltd** supply oxygen resuscitation sets.

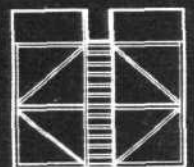


Sun fire/crash tender on Thornycroft chassis with Rolls-Royce engine

Fire Armour Ltd Firefly crash/fire tender



## PART SIX MAINTENANCE EQUIPMENT



### Access Equipment

Design and installation of maintenance docks is a speciality of **Rodger, Setterington & Partners, Heston Aircraft & Associated Engineers** and **Tiltman Langley Ltd.**

Among the many types of apparatus made by **Access Equipment Ltd** are the "Giraffe" hydraulic work-platform, in models giving heights up to 42ft; the "Safety Raiser," a scissors-action, hydraulically operated platform in varieties which can be built to special requirements; and "Zip-up" aluminium-alloy staging, which can be erected to heights of 100ft or more without the use of nuts, bolts or assembly tools.

An associated company of the **Mercury Truck & Tractor Co, Mercury Airfield Equipment Ltd**, include among their products a multi-level platform with a height range of from 7ft to 40ft. Hydraulically operated, the unit has particular value for reaching high tail units.

**Anderston Clyde Engineers Ltd** make a variety of access equipment under the names

"Move-on" and "Spaceman." The former are simple mobile devices, in two models with working heights of 11ft and 16ft, which the operator is able to propel by means of a handle on the platform. The latter, in four models giving heights from 21ft to 40ft, is hydraulically operated (plus electrical power if required) and is of a particularly compact nature when in the retracted position.

From the **Thames Packaging Equipment Co** comes the "Mobiliftor," a one-man platform which can be elevated to a height of 25ft by means of an air compressor driven by a single-cylinder engine. Both towed and self-propelled models are made. A maintenance platform with a maximum height of 13ft is manufactured by **Murex Welding Processes Ltd.** Three sizes are available, and operation is hydraulic. A versatile piece of access equipment is the **Simon** hydraulic platform, referred to under the heading "De-frosting Equipment" on page 921.

One of the most familiar sights in airport maintenance shops is **Dexion** slotted angle;