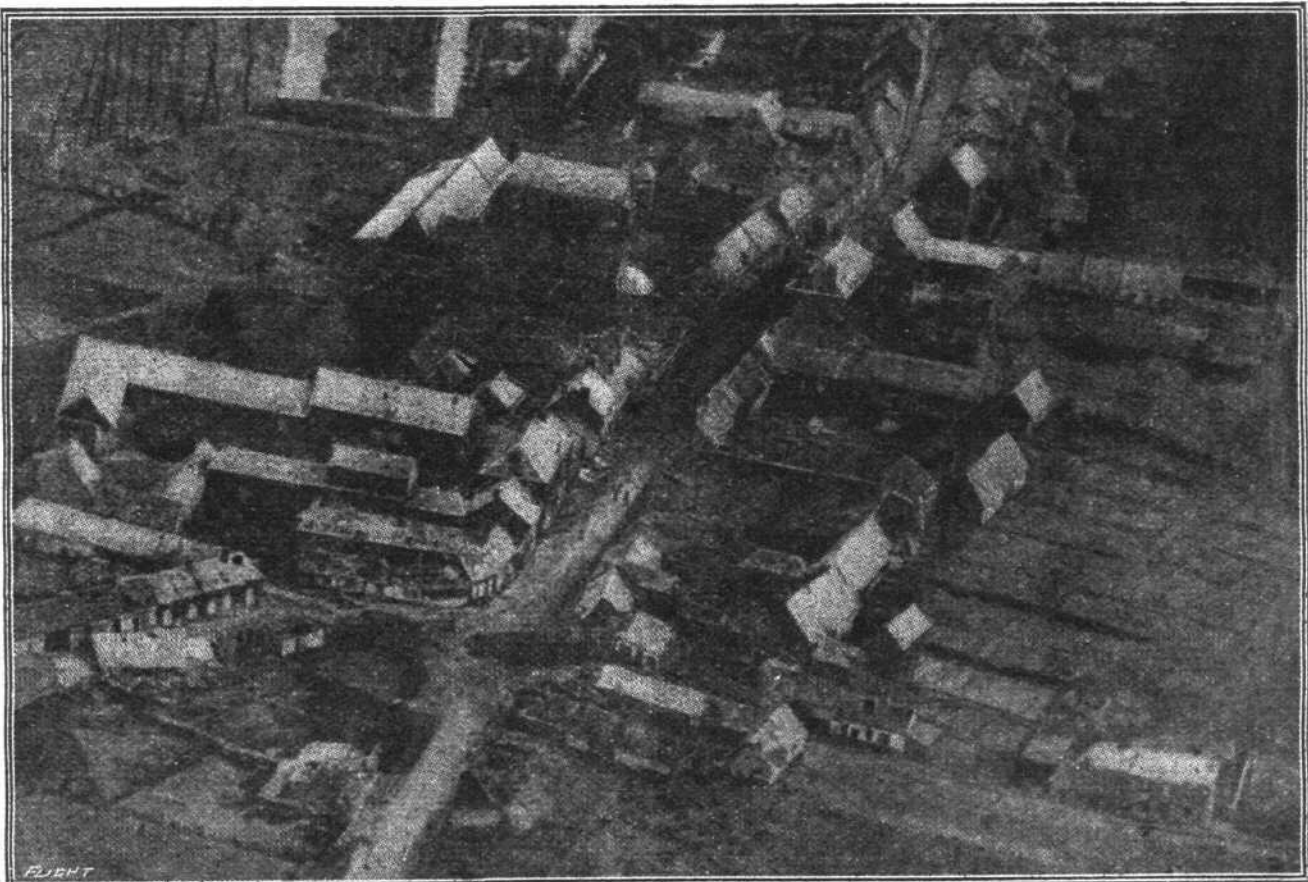




**THE RECAPTURE OF NESLE.**—On March 19th, 1917, the British cavalry entered the small town of Nesle, which had until then been occupied by the enemy. The above photograph was taken from an aeroplane at a height of 700 ft., and shows the historical event in bird's-eye view.—(*"La Guerre Aérienne."*)



**ANOTHER PHOTOGRAPH OF ONE OF THE SUBURBS OF NESLE.**—This photograph was secured from the aeroplane of Adjutant Larrouil, who was the first pilot to land in the recaptured territory.—(*"La Guerre Aérienne."*)