

Fig. 4.—Transverse wiring of a main frame

these frames is determined to a certain extent by the position of these items—more especially that of the cars. It is usually desirable to space the frames as far as possible equidistant. In R 33, which is 24 metres in diameter, the main frames

are spaced 10 metres apart, with one intermediate frame five metres from the main. In L 70, which is of the same diameter, the main frames are spaced as far as possible, 15 metres apart, with two intermediates five metres apart.

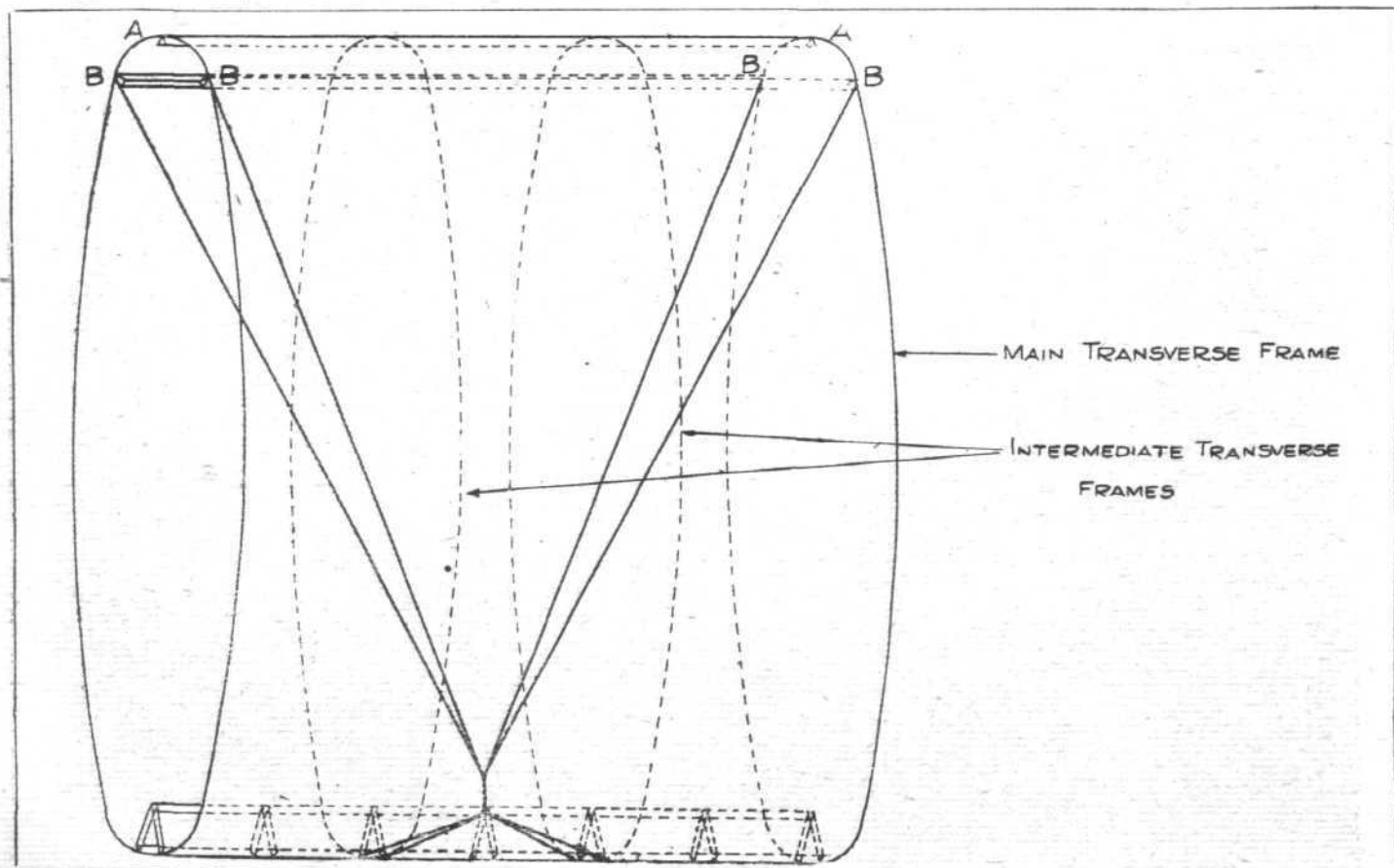


Fig. 5.—Wire support to corridor, L 70