

THE CAPRONI 90 P.B.

Italy's Giant Bomber

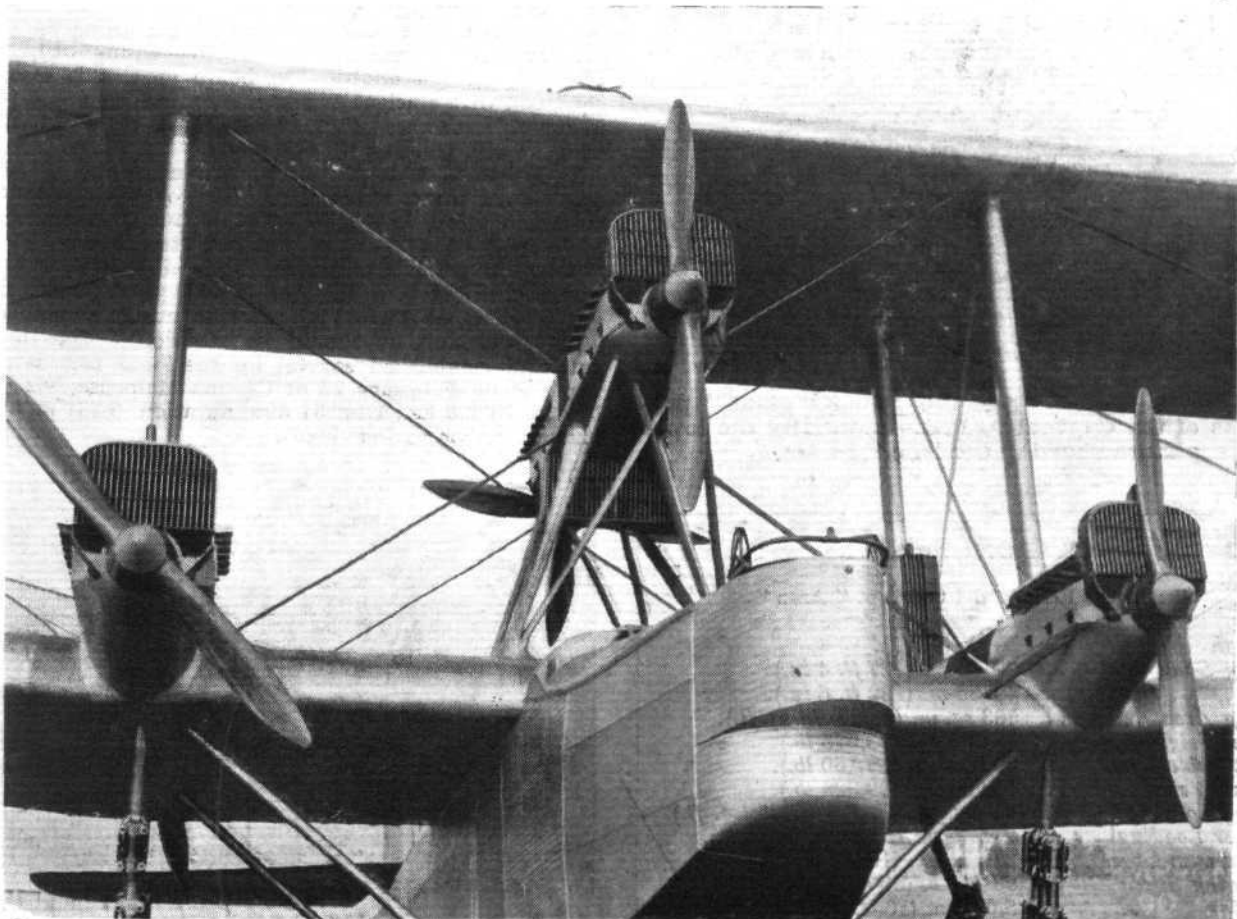
DURING the last few years Sig. Caproni, who appears to revel in what are popularly known as "giant" aircraft, economised somewhat in the dimensions of his machines—even descending from the "hundreds" to the mean proportions of the light 'plane, as in the Ca.100T, or Italian version of the "Moth." Just recently, however, this well-known Italian designer reverted to his original and early belief in the large-sized machine, and produced the Caproni 90 P.B., a few particulars of which, together with illustrations, we are able to publish this week.

The Caproni 90 P.B. is a multi-engined biplane designed for military purposes, and following typical Caproni practice—short-span upper plane and low boat-like fuselage. It has a total span of 162 ft. 6 in. (49.56 m.), and an overall height of 39 ft. 4 in. (12 m.). Owing to the fine proportions of this machine it is difficult to form an idea of its real size unless compared with some adjacent object, such as buildings

or men. This will be apparent on examining the accompanying illustrations.

The Ca.90 is constructed entirely of high-tension steel tubing, Sig. Caproni having decided that this material was preferable to light alloys (duralumin or aluminium). All joints and fittings for the steel tubing are of the socket type, and are turned entirely out of the solid. The entire structure has been carefully checked and tested for strength at the well-known laboratory of the Milan Royal Polytechnical College, and further tests were carried out in the testing laboratory adjacent to the Taliedo Works of the Caproni Co.

At the moment we have not got complete constructional details of this machine, but many of the general features may be disclosed by a careful study of the accompanying illustrations. It will be seen that the wings are of fairly thick section, the lower, and larger span, plane being mounted on the top of the fuselage and comprising a short central section to which are attached outer extensions, set at a



The upper view of the Caproni 90 P.B. shows the general lines of this huge bomber, while the arrangement of its six 1,000 h.p. Isotta engines is shown in the lower picture. Note the gun position on the top plane.